

TUBE END MILLING UNIT

Made in Germany

- High cutting capacity
- Quick and secure clamping
- Rugged and compact type of construction
- Easy handling



MF3iw

Field of application

The unit serves to machine and prepare welding edges on tubes, branches and headers. On steambloc boilers it is used for machining tube walls and cutting out welds. Having a low weight the unit is of very rugged design. Operated by one man only, it is well suited for use in the workshop and on site. Due to its extremely compact type of construction it can be readily used in confined space. Its high working speed and quick readiness allow economical manufacturing.

TECHNICAL DATA

Working range:

Tube outside diameter: min. 18 mm
max. 101,6 mm
Tube wall thickness: max. 15 mm
Form of weld: I, V or special form
Spindle stroke: 20 mm

Pneumatic geared motor:

Power: 740 W at 6 bar
400 W at 4 bar
Operating pressure: 6 - 7 bar
Air consumption: 0,96 m³/min
Compressed air connection: R 1/4"

Clamping range:

Tube inside diameter: min. 16,2 mm
max. 96 mm
Feed: manual

Electric geared motor:

Power consumption/Connection voltage:
abt.1200W with 230 V

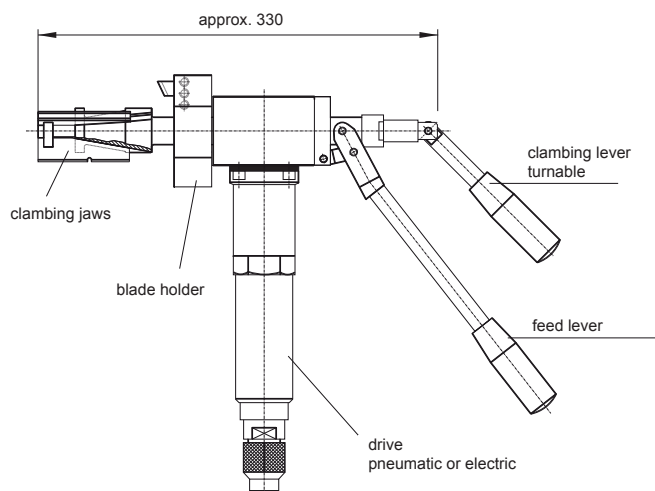
Weight:

with pneumatic drive: approx. 5,5 kg
with electric drive: approx. 7,0 kg

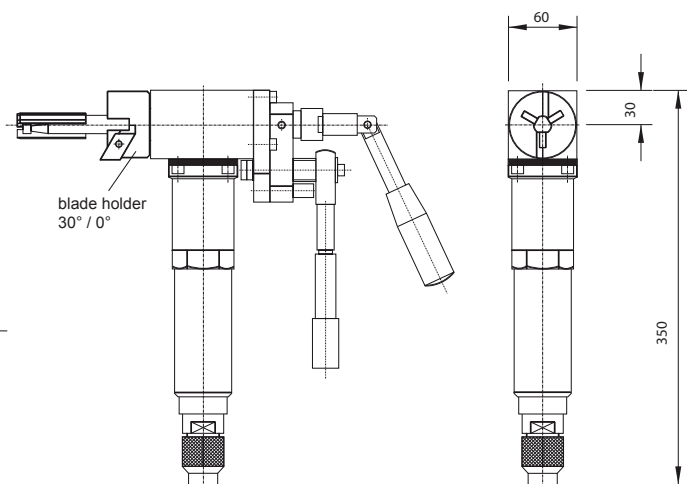
~ (singlephase-alternating current)
Protective class
II – all-insulatet

The standard version comes with levers for clamping and feeding. An extra version with a ratchet for clamping and feeding is also available.

MF3iw with feed lever



MF3iw with ratchet feed



BLADE & TOOL TIP HOLDER

with adjustable tools for tube end milling unit type **MF3iw**



091501105
HSS
cutting tool tip 0°



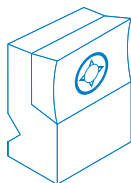
091501028
HSS
cutting tool tip 30°



091501106
HSS
cutting tool tip 0° (TIN)



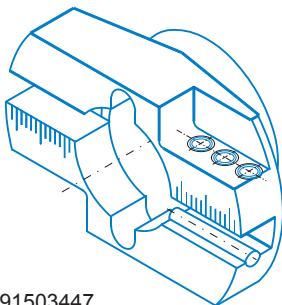
091501108
HSS
cutting tool tip 30° (TIN)



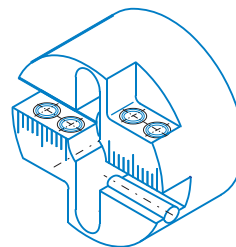
091502138
cutting tool tip holder 0°



091502136
cutting tool tip holder 30°



091503447
Universal blade holder
(Outside-Ø 101,6 mm)
(Standard blade holder)



091502166
Blade holder
for the clamping size 1
(Outside-Ø 62 mm)



091502141
HSS blade 0°



091502140
HSS blade 30°



091502162
10° - internal



091502163
8° - internal



091502135
10° - internal

Var



091502160
DIN 2559-4



091502148
DIN 2559-3



091502154
DBS 34-R3



091502159
DBS 34-R5

Blade holder can be used only with sleeve size 2 and system clamping set.

Blade holder can be used only with clamping sleeve size 1.

TOOL TIP HOLDER

for tube end milling unit type **MF3iw**

Cutting tool tip holder 0°



091501105
HSS

cutting tool tip 0°



091501106
HSS

cutting tool tip 0° (TIN)

Cutting tool tip holder 30°



091501028
HSS

cutting tool tip 30°



091501108
HSS

cutting tool tip 30° (TIN)

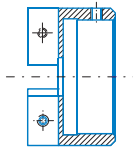
Cutting tool tip holder 45° - internal



091501187
HSS

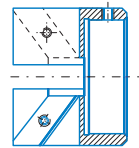
cutting tool tip 45° (TIN)

clamping sleeve 1



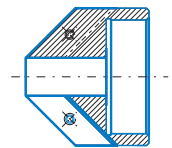
091501113

cutting tool tip holder 0°
(Ø-internal 16 mm - Ø-external 56 mm)



091501101

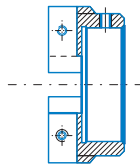
cutting tool tip holder 30°
(Ø-internal 16 mm - Ø-external 50 mm)



010007080

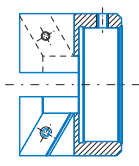
cutting tool tip holder 45°
(Ø-internal 16 mm - Ø-external 56 mm)

clamping sleeve 2



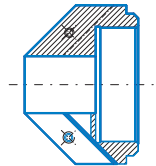
091501114

cutting tool tip holder 0°
(Ø-internal 25 mm - Ø-external 64 mm)

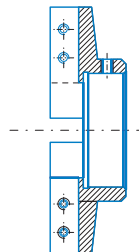


091501102

cutting tool tip holder 30°
(Ø-internal 25 mm - Ø-external 58 mm)

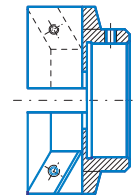


clamping sleeve 3



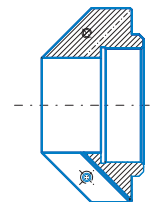
091501104

cutting tool tip holder 0°
(Ø-internal 40 mm - Ø-external 104 mm)



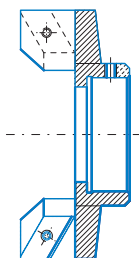
091501103

cutting tool tip holder 30°
(Ø-internal 40 mm - Ø-external 78 mm)



091501107

cutting tool tip holder 45°
(Ø-internal 40 mm - Ø-external 82 mm)



091501112
cutting tool tip holder 30°
(Ø-internal 70 mm - Ø-external 103 mm)